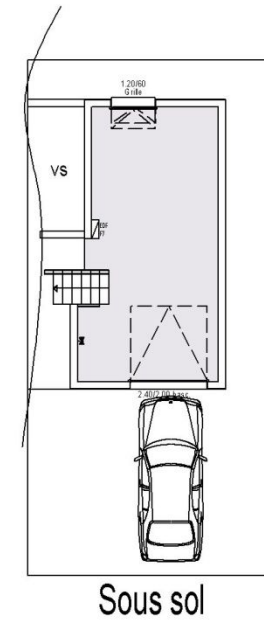
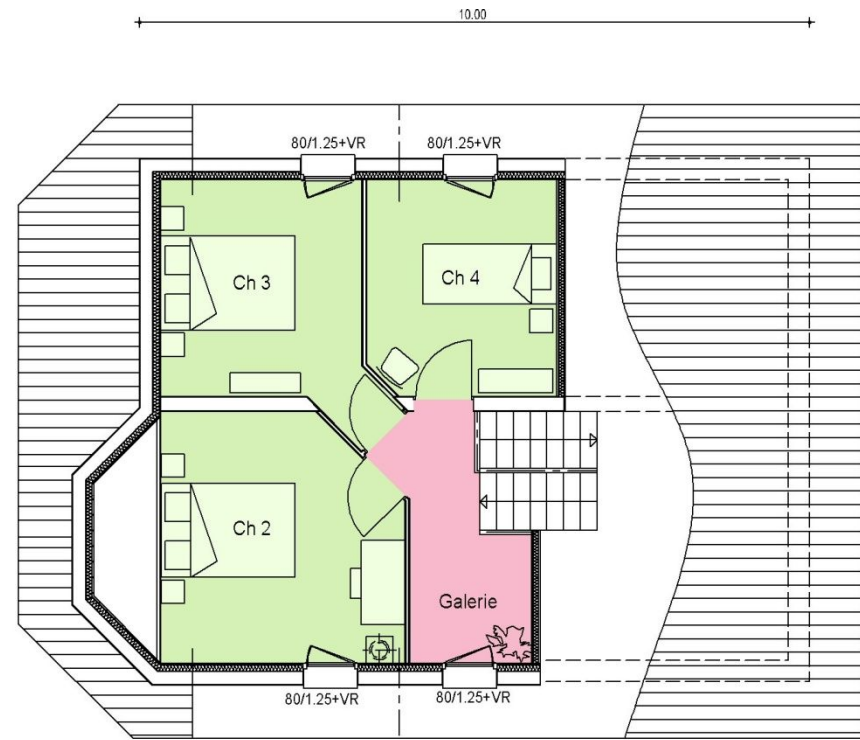
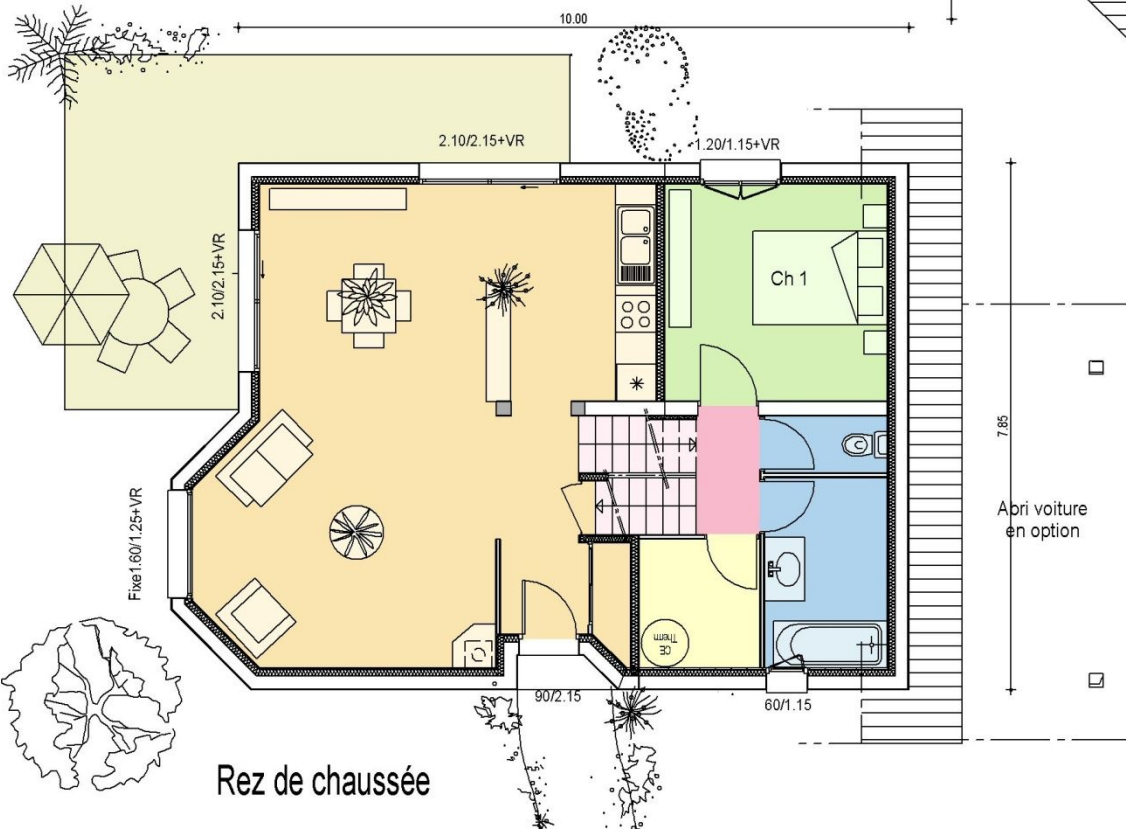
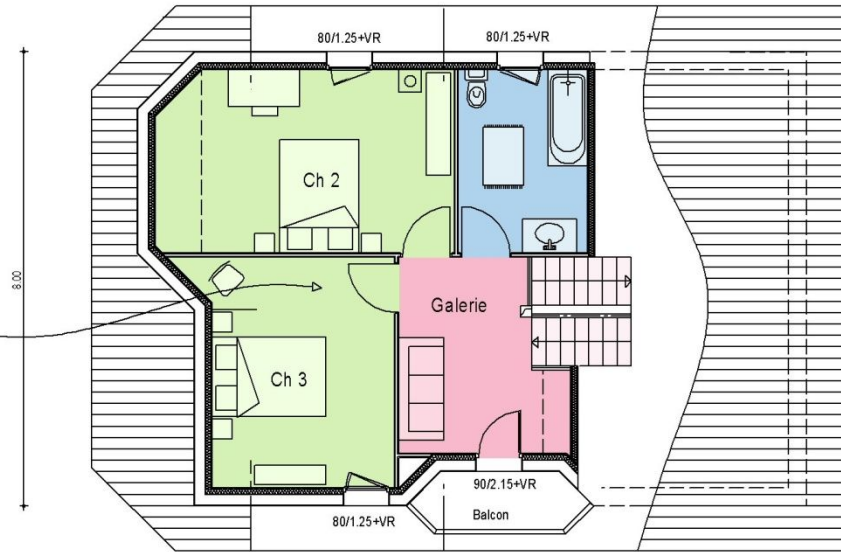
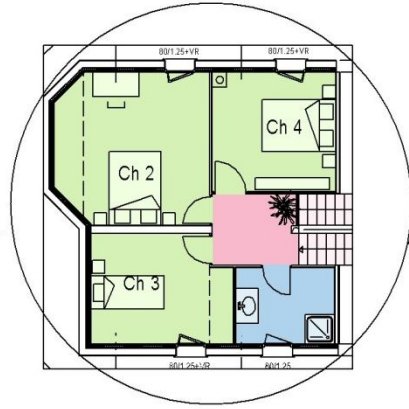


Goya 105

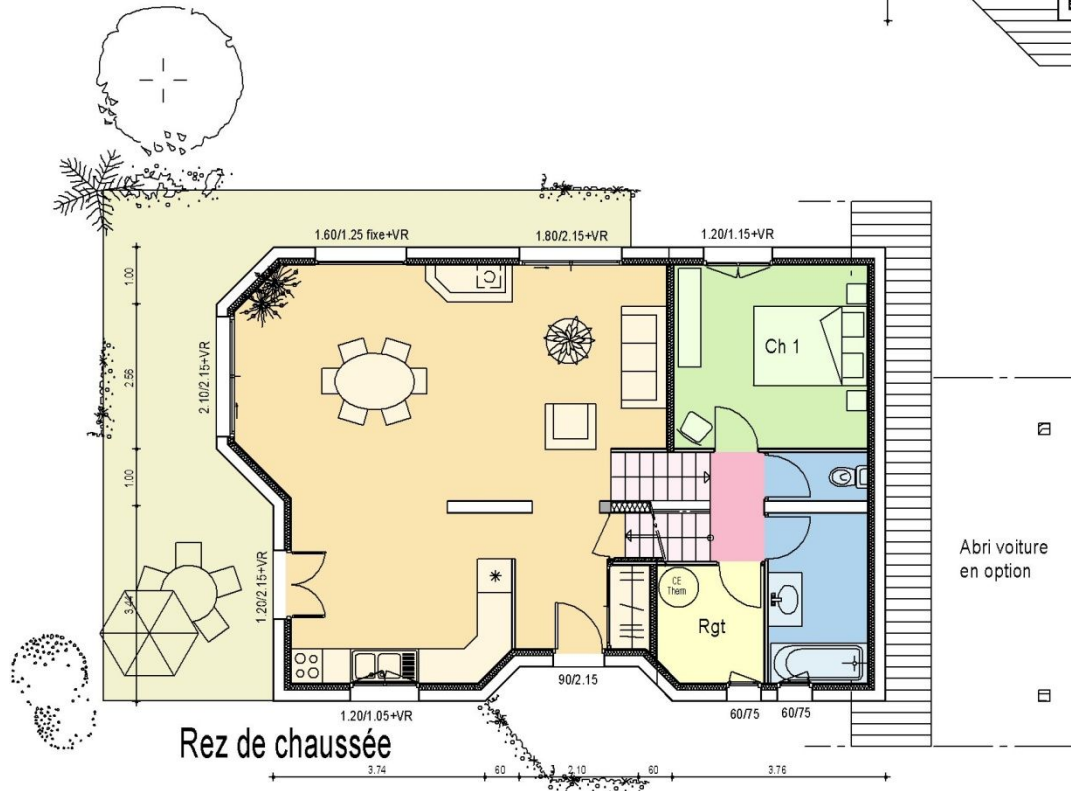
Bains	5.19 m ²
Chambre 1	10.72 m ²
Chambre 2	12.79 m ²
Chambre 3	10.43 m ²
Chambre 4	9.04 m ²
Cuisine	8.17 m ²
Degt.	1.88 m ²
Entrée	2.76 m ²
Escalier	2.90 m ²
Galerie	5.93 m ²
Garage	26.12 m ²
Roberie	3.45 m ²
Séjour	29.89 m ²
WC	1.56 m ²
SURFACE AMENAGEE	104.71 m ²
SURFACE HABITABLE	95.88 m ²
SURFACE ANNEXES	26.12 m ²



Possibilité de faire une version 4 chambres



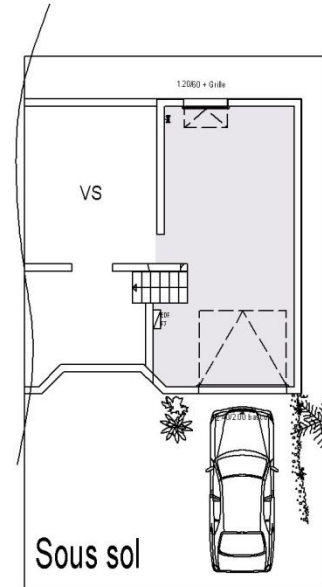
Etage



Abri voiture en option

Bains	5.23 m ²
Bains	7.36 m ²
Chambre 1	11.01 m ²
Chambre 2	16.69 m ²
Chambre 3	13.39 m ²
Cuisine	12.10 m ²
Degt.	1.82 m ²
Entrée	4.12 m ²
Escalier	3.36 m ²
Galerie	9.23 m ²
Garage	26.93 m ²
Pl.	1.00 m ²
Rangt.	3.83 m ²
Séjour	29.85 m ²
WC	1.49 m ²
SURFACE AMENAGEE	120.48 m ²
SURFACE HABITABLE	107.22 m ²
SURFACE ANNEXES	26.93 m ²

Sous-Sol



Sous sol